



300K - Well #4 Perryville Visual Sanitary Inspection Report

Project Information

300K Elevated Tank

Prepared For

City of Perryville

Prepared On

09/17/18

Prepared By

Brad Huebner





Table of Contents

Report produced using www.FastPhotoReports.com

Cover	1
Table of Contents	2
General Information	3
Tank Details	3
Exterior Coatings Condition	4
Interior Coatings Condition	6
Photo Observations	8
Exterior Photos	8
Interior Photos	20
Tank Recommendations	26
Recommendations	26



CIS
 PO Box 133 Eureka, MO 63025
coatinginspectionsservices.net





General Information

Capacity: 300,000 gallon

Construction Style: Toro-Elipsoidal

Builder: Phoenix

Construction Date: 2016

Height/Width: 180' HWL

Exterior Coating: Urethane

Interior Coating: Epoxy

Inspector: Brad Huebner

Inspection Date: 09-13-18



CIS
PO Box 133 Eureka, MO 63025
coatinginspectionsservices.net





Exterior Coatings Condition

Coatings are in good condition with no visible spot failures detected. The average coating thickness is 10-12 mils DFT.

Foundation :	Good condition
Overflow Pipe:	Good condition
Overflow Screen:	Tidflex Valve
Flap Gate:	Tidflex Valve
Splash Pad:	Concrete with curb
Exterior ladder:	Good condition
Safety Climb:	Cable
Ladder Gate:	Aluminum
Vent:	Steel, in good condition - no insect screen
Manway:	24" with galvanized bolts
Catwalk:	Good with weep holes
Cables:	antenna on leg and cables to tank bowl
Roof Hatch:	30" square with 5" curb, no lock
Aviation Light:	(2) aviation lights



Phone: 3147033705

Exterior Coatings Condition



CIS
PO Box 133 Eureka, MO 63025
coatinginspectionsservices.net





Interior Coatings Condition

Coatings appear to be in good condition with no visible failures with an average of 14 mils DFT. Some mineral staining at the high water mark.

Interior Wet Ladder:	Good, cabled
Safety Climb:	Cable
Interior Riser ladder:	Good condition
Cathodic Protection:	N/A
Dry riser:	N/A



CIS
PO Box 133 Eureka, MO 63025
coatinginspectionsservices.net





Phone: 3147033705

Interior Coatings Condition



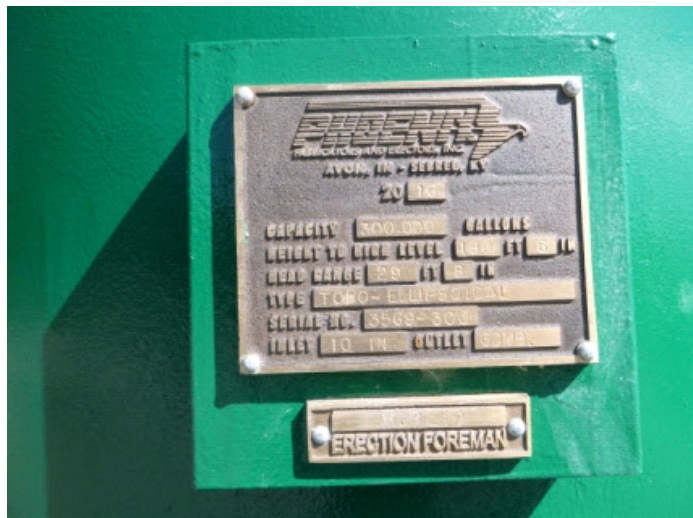
CIS
PO Box 133 Eureka, MO 63025
coatinginspectionsservices.net





Exterior Photos

Exterior Photos





Exterior Photos





Exterior Photos



CIS
PO Box 133 Eureka, MO 63025
coatinginspectionsservices.net





Exterior Photos





Exterior Photos





Exterior Photos



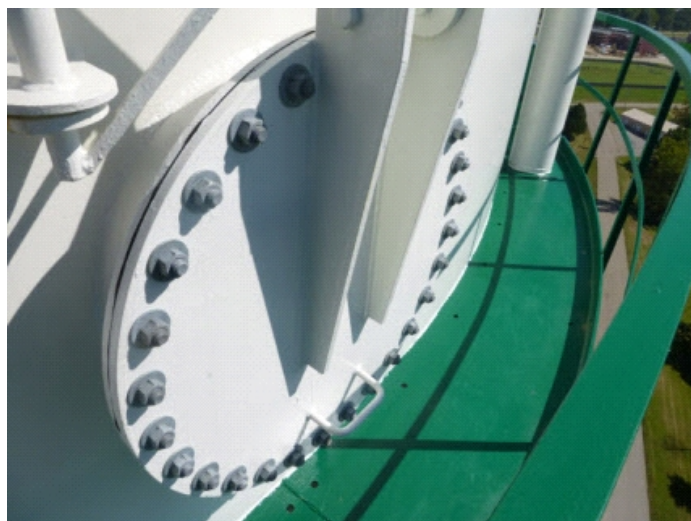


Exterior Photos





Exterior Photos



CIS
PO Box 133 Eureka, MO 63025
coatinginspectionsservices.net





Exterior Photos





Exterior Photos

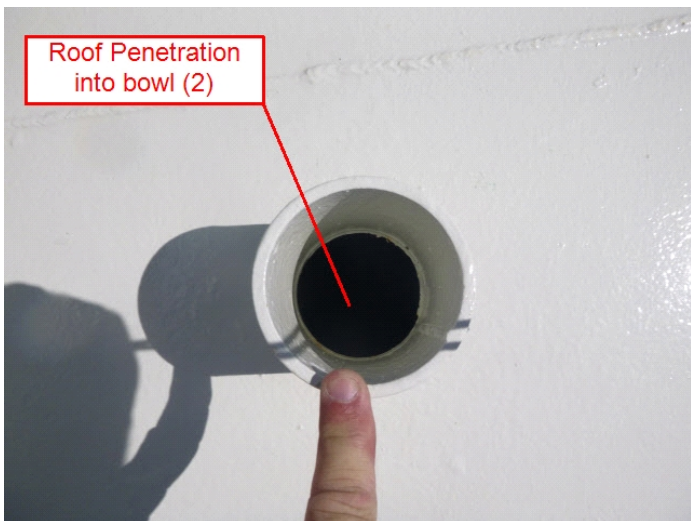


CIS
PO Box 133 Eureka, MO 63025
coatinginspectionsservices.net





Exterior Photos

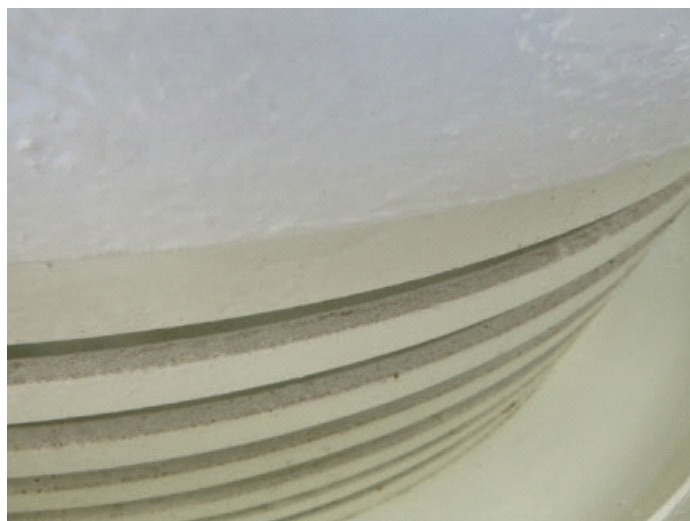
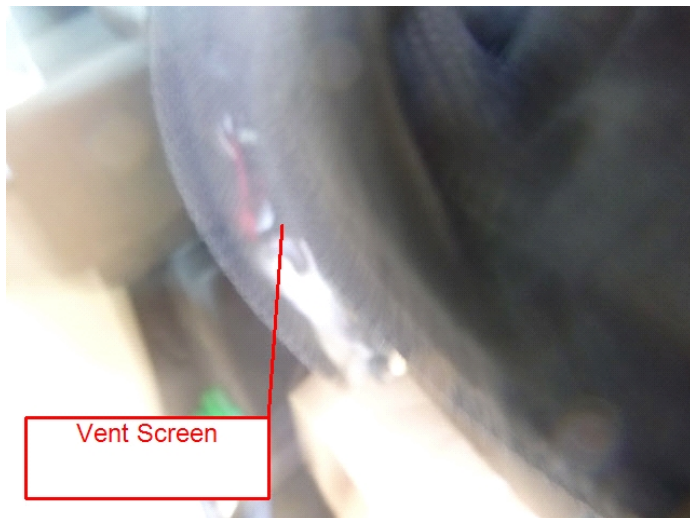


CIS
PO Box 133 Eureka, MO 63025
coatinginspectionsservices.net



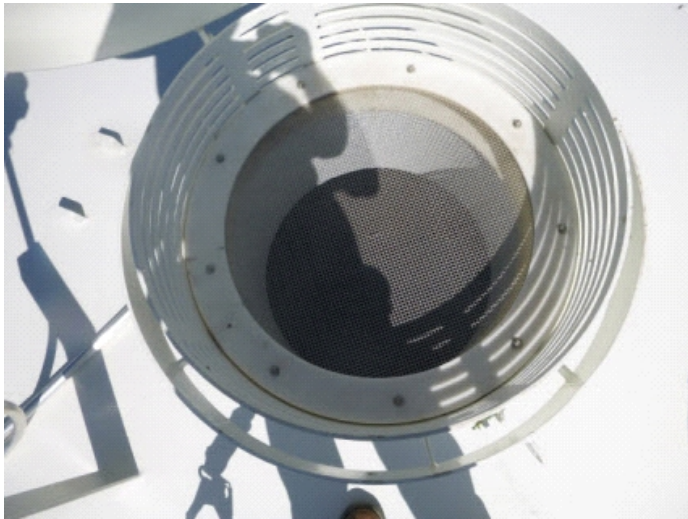


Exterior Photos





Exterior Photos



Interior Photos

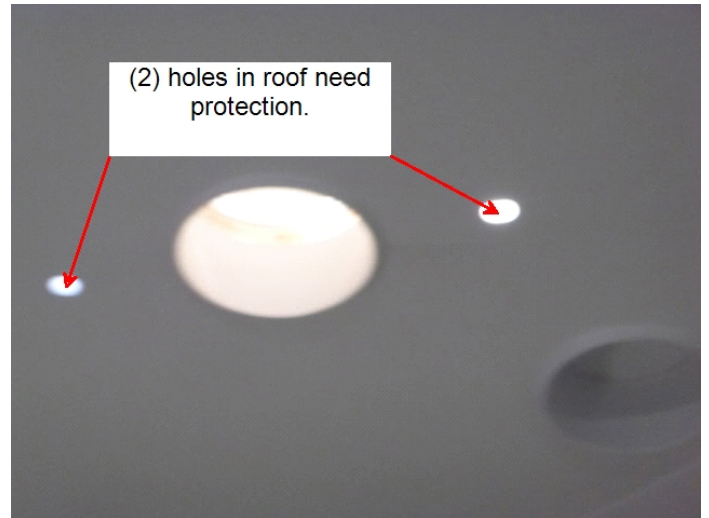


CIS
PO Box 133 Eureka, MO 63025
coatinginspectionsservices.net





Interior Photos





Interior Photos



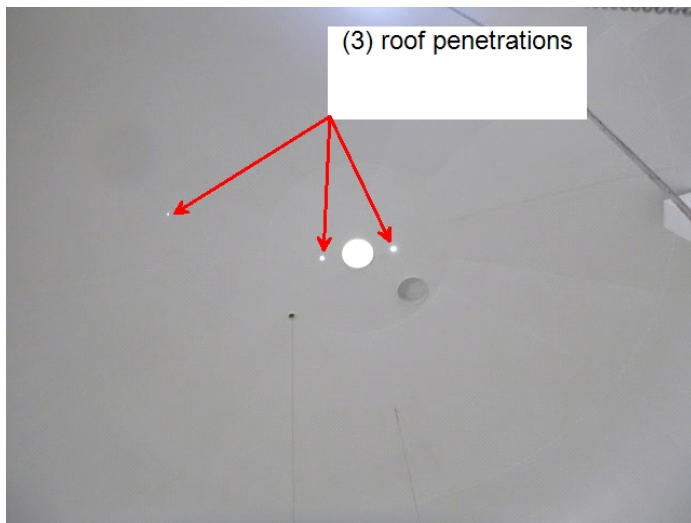


Interior Photos





Interior Photos





Interior Photos





Tank Recommendations

1. Relocate conduit and cables from side of ladder to comply with OSHA regulations.
2. Recommend the installation of stainless steel bolts in lieu of galvanized on riser manway to prevent future rusting and bolts seizing.
3. Three (3) roof penetrations need to be closed off to prevent contamination of tank.



CIS
PO Box 133 Eureka, MO 63025
coatinginspectionsservices.net

